

FRONT ELEVATION

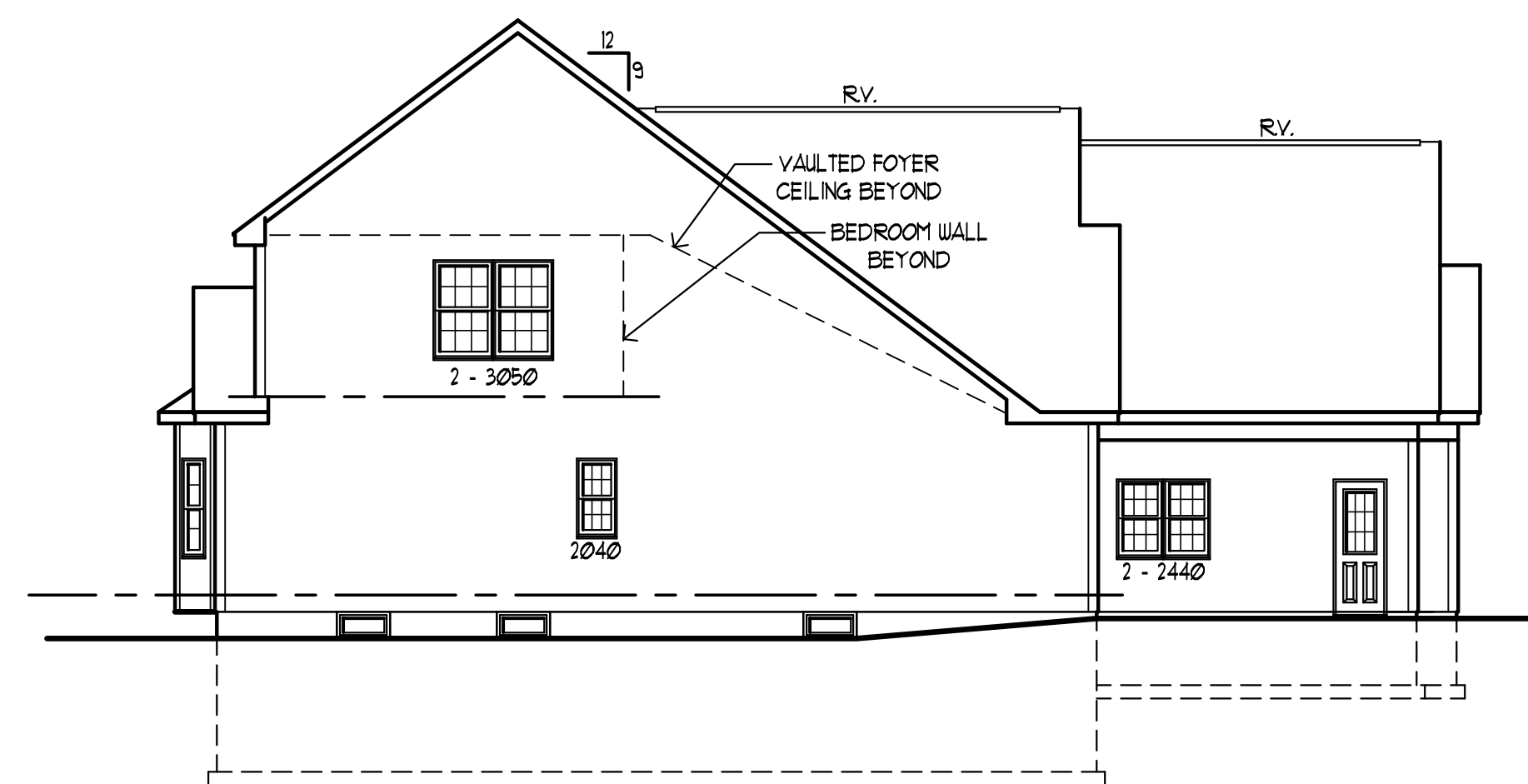
1/4" = 1' - 0"

2010 ENERGY CONSERVATION CONSTRUCTION CODE OF NEW YORK STATE
 PRESCRIPTIVE COMPONENT COMPLIANCE WITH TABLE 402.1 (1)
 CLIMATE ZONE 5

ENVELOPE COMPONENT	REQUIRED R VALUE	PROVIDED R VALUE
EXTERIOR WALL INSULATION	R = 20	R = 20
ROOF/CEILING INSULATION	R = 38	R = 38
GLAZING	U = .25	U = .25
BASEMENT WALLS	R = 10	R = 11

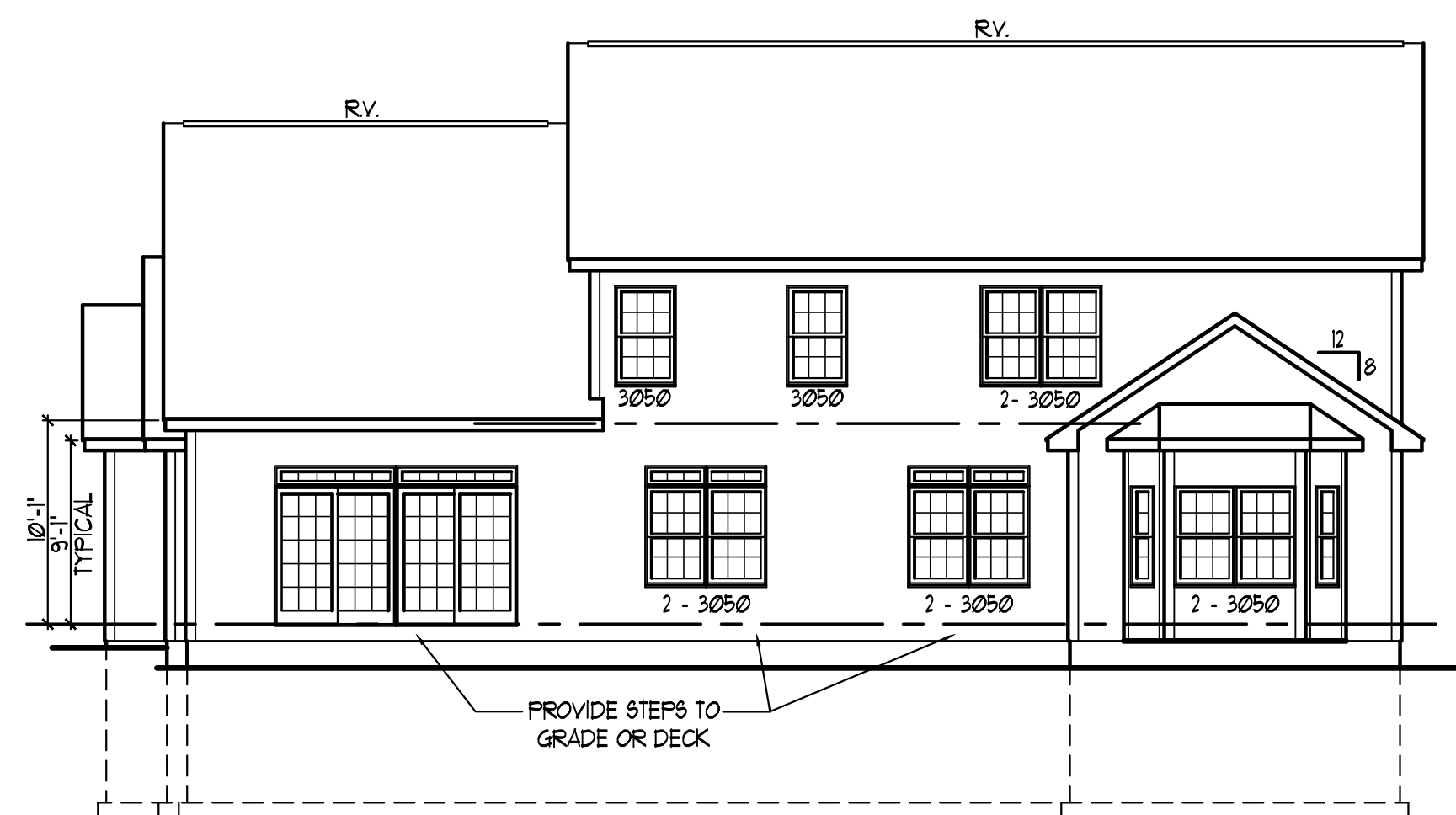
NOTE:
 AIR SEAL ALL WALLS, RIM JOISTS AND CEILINGS IN ACCORDANCE WITH SECTION 402.4 OF THE ENERGY CONSERVATION CONSTRUCTION CODE OF N.Y.S. INCLUDING SPECIAL INSPECTION

TO THE BEST OF MY KNOWLEDGE, BELIEF AND PROFESSIONAL JUDGEMENT, THESE PLANS ARE IN COMPLIANCE WITH THE ENERGY CONSERVATION CONSTRUCTION CODE OF N.Y.S.



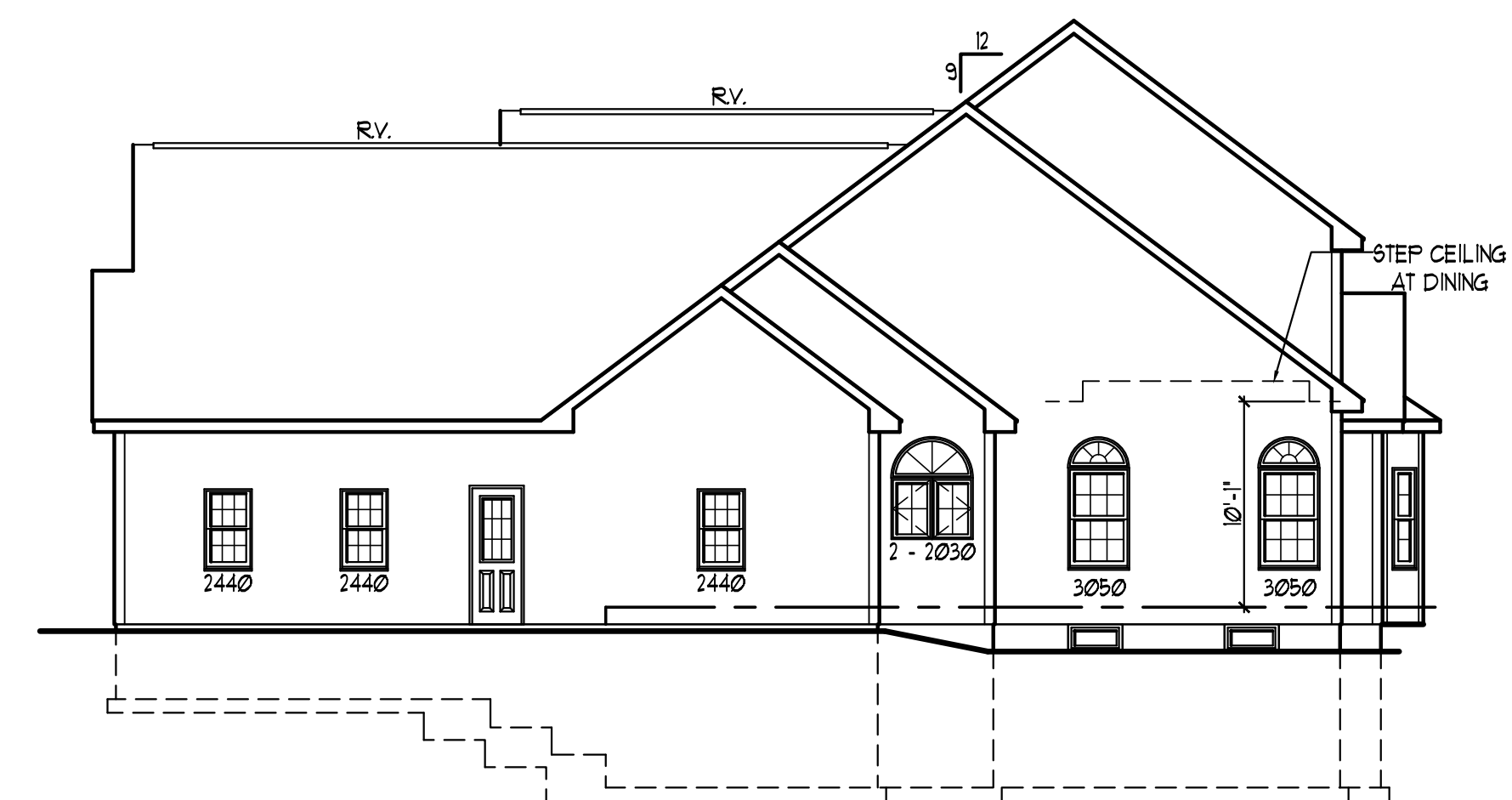
LEFT ELEVATION

1/8" = 1' - 0"



REAR ELEVATION

1/8" = 1' - 0"



RIGHT ELEVATION

1/8" = 1' - 0"